

1

1.1

1.1 - 1

가 가

1915	241,085	NA	NA	124,432	116,653	55,367	4.35
1916	253,068	11,983	4.97	131,030	122,038	58,082	4.36
1917	253,154	86	0.03	131,033	122,121	58,063	4.36
1918	250,942	-2,212	-0.87	129,856	121,086	57,381	4.37
1919	248,684	-2,258	-0.90	128,510	120,174	57,029	4.36
1920	250,208	1,524	0.61	129,273	120,935	54,614	4.58
1921	261,698	11,490	4.59	136,069	125,629	57,029	4.59
1922	271,414	9,716	3.71	140,514	130,900	59,689	4.55
1923	288,260	16,846	6.21	149,924	138,336	63,863	4.51
1924	297,465	9,205	3.19	154,106	143,359	66,151	4.50
1925	336,349	38,884	13.07	176,359	159,990	70,192	4.79
1926	306,363	-29,986	-8.92	157,847	148,516	68,863	4.45
1927	315,006	8,643	2.82	162,953	152,053	70,288	4.48
1928	321,848	6,842	2.17	167,046	154,802	71,201	4.52
1929	340,290	18,442	5.73	176,449	163,841	74,331	4.58
1930	355,426	15,136	4.45	183,305	172,121	74,909	4.74
1931	365,432	10,006	2.82	186,447	178,985	77,701	4.70
1932	374,909	9,477	2.59	187,009	187,900	78,261	4.79
1933	382,491	7,582	2.02	191,249	191,242	79,519	4.81
1934	394,511	12,020	3.14	197,108	197,403	80,961	4.87
1935	404,202	9,691	2.46	200,901	203,301	82,822	4.88
1936	727,241	323,039	79.92	388,194	339,047	138,583	5.25
1937	706,396	-20,845	-2.87	349,178	357,218	144,252	4.90
1938	737,214	30,818	4.36	363,893	373,321	148,856	4.95
1939	774,286	37,072	5.03	381,400	392,886	154,223	5.02
1940	930,547	156,261	20.18	461,183	469,364	164,110	5.67
1941	974,933	44,386	4.77	480,960	493,973	173,162	5.63
1942	1,114,004	139,071	14.26	560,066	552,938	193,610	5.75
1943	1,078,173	-35,831	-3.22	536,633	541,545	199,190	5.41
1944	947,630	-130,543	-12.11	450,287	497,343	193,915	4.89
1945	901,371	-46,259	-4.88	424,687	476,684	189,590	4.75
1946	1,266,057	364,686	40.46	645,515	620,542	234,819	5.39
1947	1,646,902	380,845	30.08	841,902	804,998	293,139	5.62
1948	1,707,522	60,620	3.68	869,422	838,100	308,287	5.54
1949	1,418,025	-289,497	-16.95	715,078	702,947	272,314	5.21
1950	1,693,224	275,199	19.41	850,758	842,466	318,673	5.31
1951	648,432	-1,044,792	-61.70	287,205	361,227	134,822	4.81
1952	716,865	68,433	10.55	330,547	386,318	147,502	4.86
1953	1,010,416	293,551	40.95	479,798	530,618	195,829	5.16
1954	1,242,880	232,464	23.01	603,063	639,817	230,716	5.39
1955	1,428,060	185,180	14.90	697,607	730,453	260,712	5.48
1956	1,508,773	80,713	5.65	739,888	768,885	276,714	5.45
1957	1,671,563	162,790	10.79	821,281	850,280	304,853	5.48
1958	1,762,129	90,566	5.42	869,385	892,744	323,894	5.44
1959	2,100,054	337,925	19.18	1,038,363	1,061,691	386,217	5.44
1960	2,444,883	344,829	16.42	1,223,708	1,221,175	447,089	5.47

: , %, 戶, /戶

()

	가 가						
1961	2,584,952	140,069	5.73	1,274,256	1,310,696	486,697	5.31
1962	2,983,324	398,372	15.41	1,477,421	1,505,903	554,136	5.38
1963	3,254,630	271,306	9.09	1,608,513	1,646,117	597,132	5.45
1964	3,424,385	169,755	5.22	1,692,106	1,732,279	633,026	5.41
1965	3,470,880	46,495	1.36	1,708,423	1,762,457	649,290	5.35
1966	3,793,280	322,400	9.29	1,894,739	1,898,541	725,130	5.23
1967	3,969,218	175,938	4.64	1,951,732	2,017,486	754,261	5.26
1968	4,334,973	365,755	9.21	2,140,083	2,194,890	837,362	5.18
1969	4,776,928	441,955	10.20	NA	NA	961,491	4.97
1970	5,433,198	656,270	13.74	2,666,129	2,767,069	1,096,871	4.95
1971	5,850,925	417,727	7.69	2,914,059	2,936,866	1,151,078	5.08
1972	6,076,143	225,218	3.85	3,020,029	3,056,114	1,182,655	5.14
1973	6,289,556	213,413	3.51	3,095,992	3,193,564	1,215,538	5.17
1974	6,541,500	251,944	4.01	3,220,575	3,320,925	1,273,678	5.14
1975	6,889,502	348,002	5.32	3,432,182	3,457,320	1,409,577	4.89
1976	7,254,958	365,456	5.30	3,580,754	3,674,204	1,461,009	4.97
1977	7,525,629	270,671	3.73	3,725,972	3,799,657	1,529,323	4.92
1978	7,823,195	297,566	3.95	3,894,433	3,928,762	1,609,121	4.86
1979	8,114,021	290,826	3.72	4,038,173	4,075,848	1,713,193	4.74
1980	8,364,379	250,358	3.09	4,168,875	4,195,504	1,849,324	4.52
1981	8,676,037	311,658	3.73	4,288,804	4,387,233	1,915,104	4.53
1982	8,916,481	240,444	2.77	4,412,300	4,504,181	2,000,678	4.46
1983	9,204,344	287,863	3.23	4,607,351	4,596,993	2,116,334	4.35
1984	9,501,413	297,069	3.23	4,759,713	4,741,700	2,245,598	4.23
1985	9,639,110	137,697	1.45	4,795,086	4,844,024	2,337,564	4.12
1986	9,798,542	159,432	1.65	4,905,220	4,893,322	2,428,173	4.04
1987	9,991,089	192,547	1.97	5,006,777	4,984,312	2,518,128	3.97
1988	10,286,503	295,414	2.96	5,161,685	5,124,818	2,658,371	3.87
1989	10,576,794	290,291	2.82	5,310,907	5,265,887	2,816,510	3.76
1990	10,612,577	35,783	0.34	5,326,341	5,286,236	2,820,292	3.76
1991	10,904,527	291,950	2.75	5,485,353	5,419,174	3,330,317	3.27
1992	10,969,862	65,335	0.60	5,519,096	5,450,766	3,383,169	3.24
1993	10,925,464	-44,398	-0.40	5,496,638	5,428,826	3,430,528	3.18
1994	10,798,700	-126,764	-1.16	5,429,554	5,369,146	3,455,665	3.12
1995	10,231,217	-567,483	-5.26	5,138,935	5,092,282	2,974,006	3.44
1996	10,469,852	238,635	2.33	5,258,247	5,211,605	3,456,575	3.03
1997	10,389,057	-80,795	-0.77	5,214,266	5,174,791	3,498,506	2.97
1998	10,321,496	-67,561	-0.65	5,173,556	5,147,940	3,458,511	2.98
1999	10,321,449	-47	0.00	5,170,662	5,150,787	3,490,616	2.96
2000	10,373,234	51,785	0.50	5,198,186	5,175,048	3,540,492	2.93

: , %, 戶, /戶

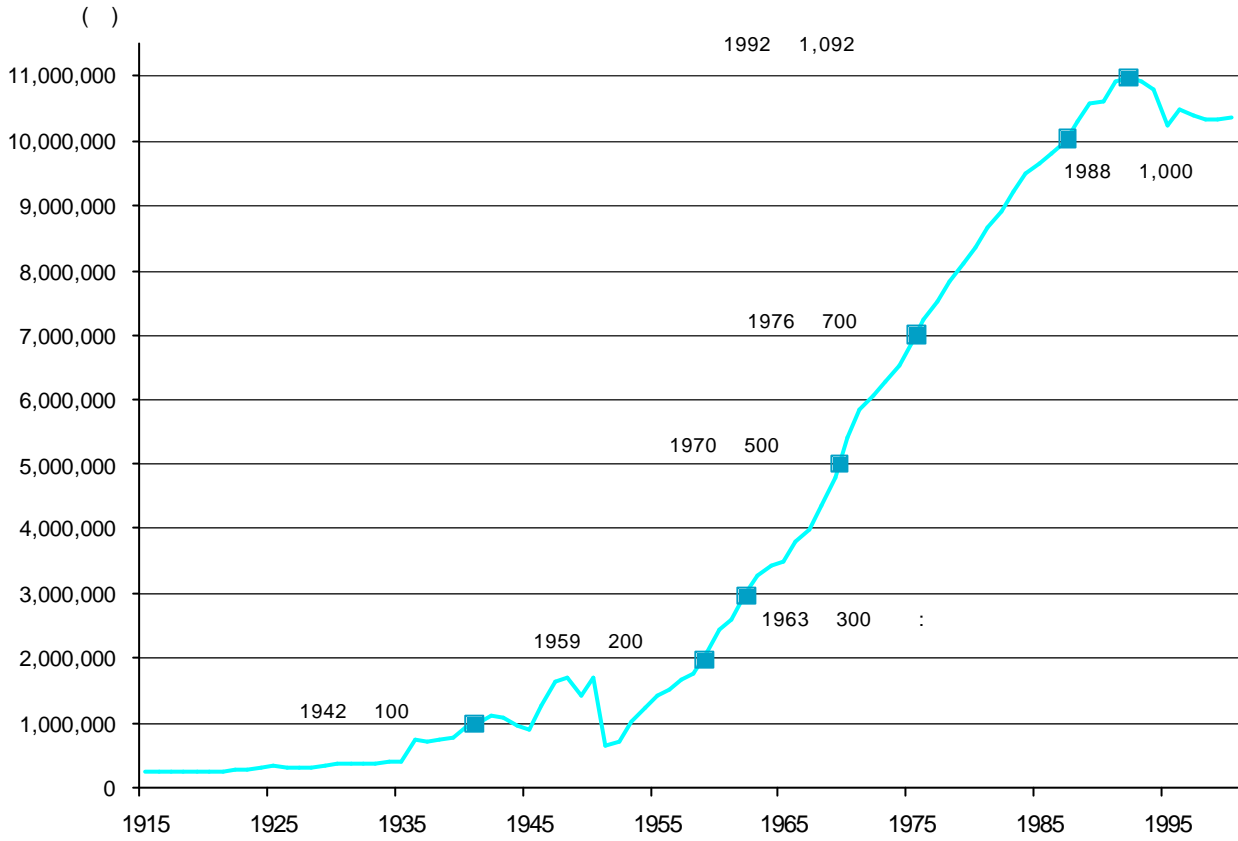
1. 1942, 47, 57

2. , 가

, 1961

1.1-1

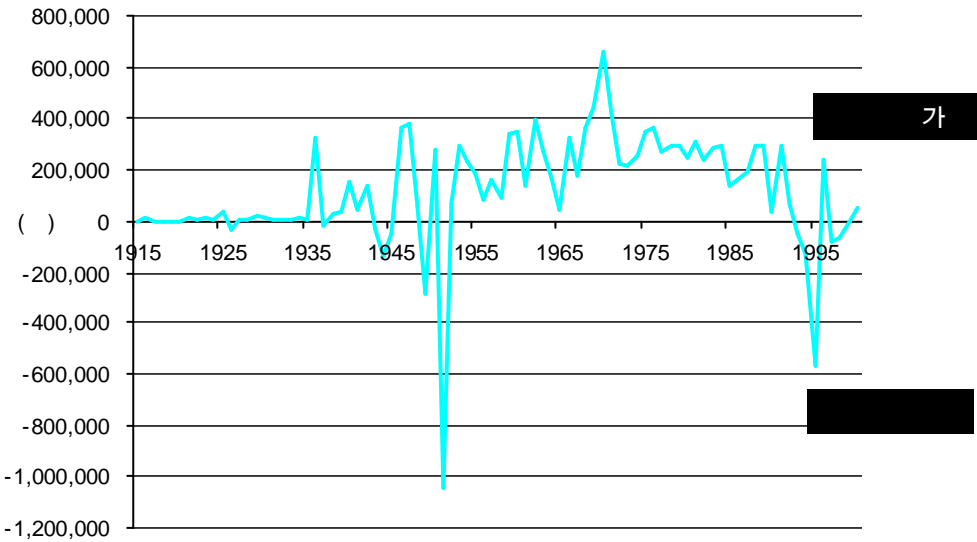
가



100
 20 가
 20
 가
 가 1915
 24 . 20
 1935 가 3~6%
 가 79.9% 가 1936
 가 73 가
 . 1930 1950 170 가
 가 1942 100 가 1951 64
 . 1945 , 1945 100
 가 1946 , 1959 200
 가 40%가 가 36
 가 . 4
 가 50%
 , 1960 1970
 가 20~60
 . 1960 가
 , 가
 , 가가 가

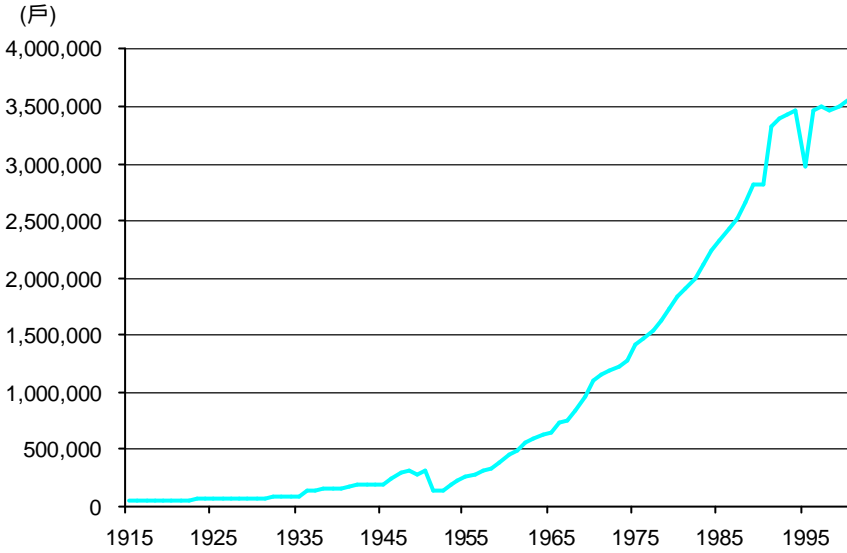
1953 100
 6 1959 200 가
 , 4 1963 가 2~4%
 300 , 5 1968 가
 400 , 2 1970 2~4 가 100
 500 . 1970 가 . 1979 800
 , 2 1983 900
 1972 600 , 1988
 4 1976 700 , 3 5
 1979 800 1,000
 가 100 1,037
 1953 15 가 10 20 가
 가 100
 1980 1,000
 가
 가 가

1.1-2



1.1-3

가

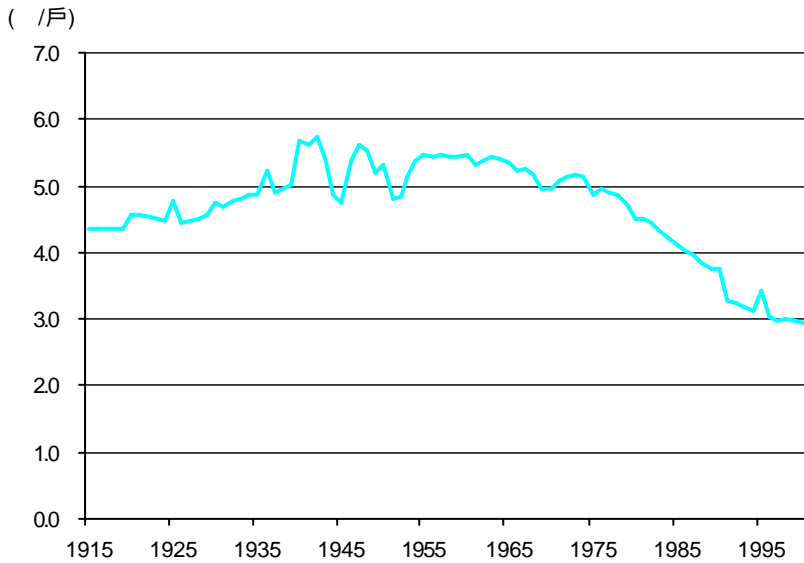


가

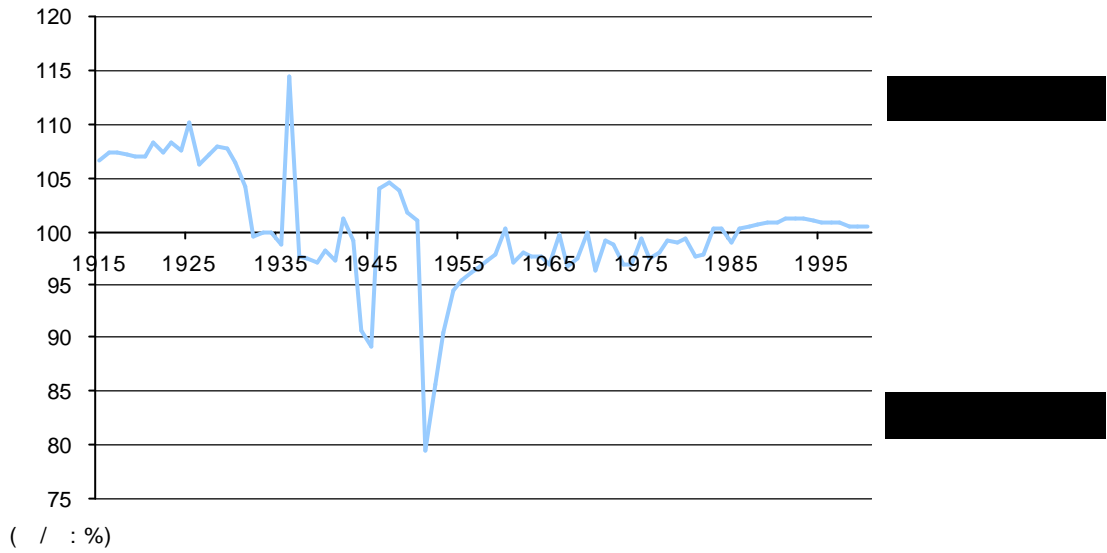
가
 . 1915 5.5 가
 1936 10 가
 , 1946 20 가
 가 .
 1970
 100 가 1982
 200 가 , 1991 300
 가 . 가
 가 가
 . 1960, 70 가
 가 , 가 가
 1980 가 10
 가 가 ,
 가 가 가
 가 가 가
 가 가

1.1-4

가

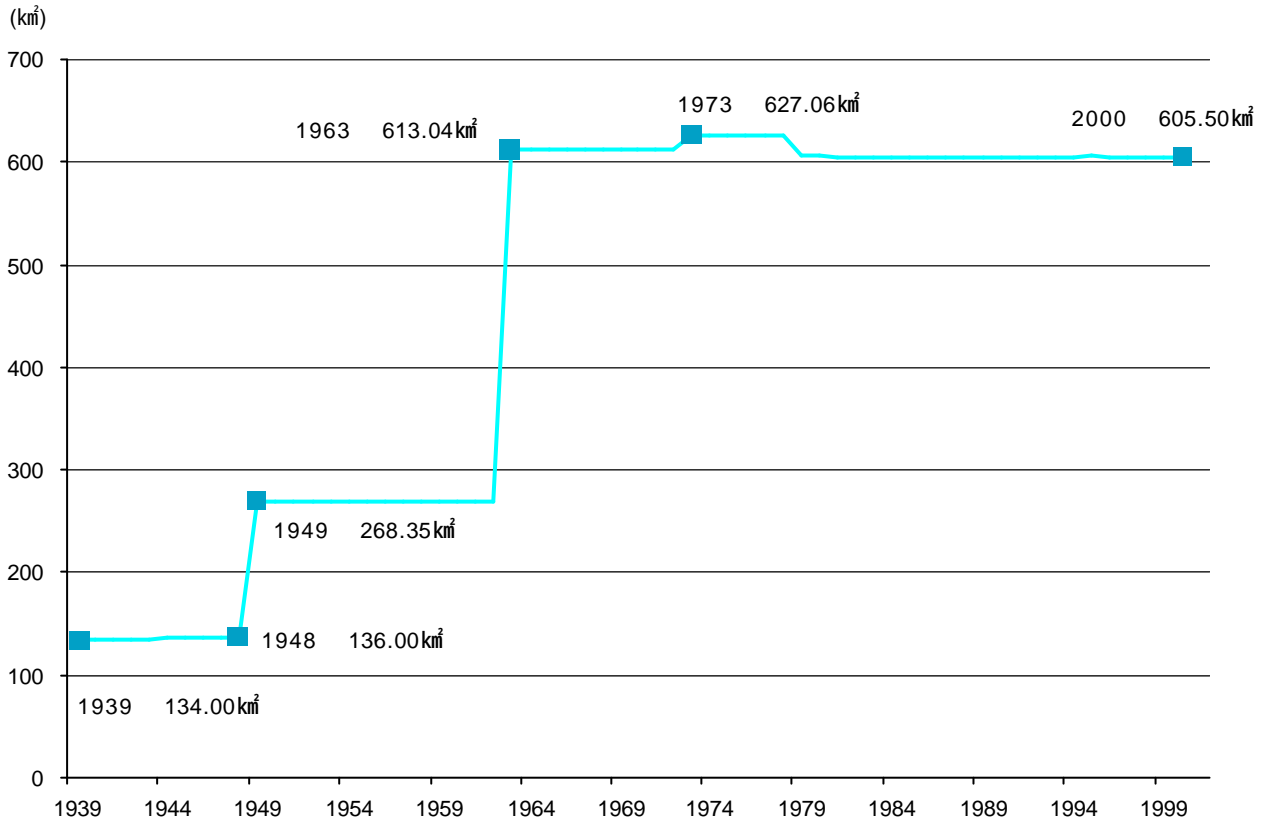


1930
 5
 . 1970 5
 , 1980
 4
 2000 2.93
 가 가 가
 1942 5.75
 가
 가



1.1-1 가 , 20 가 , 1930 가 , 1930 가 , 1945 가 , 1950 가 , 1950~1980 가 , 1980 가 , 1930 가 , 1950 가 , 1950 가 , 1960~70 가 , 1960~70 가 , 1980 가 , 1983 가 , 1983 가 , 106~110 가 , 1960 가 , 1983 가 , 100.2, 1990 5 가 , 1960~70 가 , 100.7, 2000 가 , 100. 가

1.2



2000 605.50 km² 가

1963 613.04 km² 2.3 가

1949 268.35 km² 가

1973 627.06 km² 가

1939 134.00 km² 가

1948 136.00 km² 가

1960 605.50 km² 가

(城底十里)

1939	134.00	774,286	5778.3				
1940	134.00	930,547	6944.4	1970	613.04	5,433,198	8862.7
1941	134.00	974,933	7275.6	1971	613.04	5,850,925	9544.1
1942	134.00	1,114,004	8313.5	1972	613.04	6,076,143	9911.5
1943	134.00	1,078,173	8046.1	1973	627.06	6,289,556	10030.2
1944	136.00	947,630	6967.9	1974	627.06	6,541,500	10432.0
1945	136.00	901,371	6627.7	1975	627.06	6,889,502	10987.0
1946	136.00	1,266,057	9309.2	1976	627.06	7,254,958	11569.8
1947	136.00	1,646,902	12109.6	1977	627.06	7,525,629	12001.4
1948	136.00	1,707,522	12555.3	1978	627.06	7,823,195	12476.0
1949	268.35	1,418,025	5284.2	1979	607.28	8,114,021	13361.2
1950	268.35	1,693,224	6309.8	1980	607.27	8,364,379	13773.7
1951	268.35	648,432	2416.4	1981	605.26	8,676,037	14334.4
1952	268.35	716,865	2671.4	1982	605.33	8,916,481	14730.0
1953	268.35	1,010,416	3765.3	1983	605.31	9,204,344	15206.0
1954	268.35	1,242,880	4631.6	1984	605.38	9,501,413	15695.0
1955	268.35	1,428,060	5321.6	1985	605.43	9,639,110	15921.1
1956	268.35	1,508,773	5622.4	1986	605.42	9,798,542	16184.7
1957	268.35	1,671,563	6229.0	1987	605.42	9,991,089	16502.7
1958	268.35	1,762,129	6566.5	1988	605.40	10,286,503	16991.3
1959	268.35	2,100,054	7825.8	1989	605.43	10,576,794	17469.9
1960	268.35	2,444,883	9110.8	1990	605.34	10,612,577	17531.6
1961	268.35	2,584,952	9632.8	1991	605.33	10,904,527	18014.2
1962	268.35	2,983,324	11117.3	1992	605.36	10,969,862	18121.2
1963	613.04	3,254,630	5309.0	1993	605.40	10,925,464	18046.7
1964	613.04	3,424,385	5585.9	1994	605.43	10,798,700	17836.4
1965	613.04	3,470,880	5661.8	1995	605.78	10,231,217	16889.3
1966	613.04	3,793,280	6187.7	1996	605.58	10,469,852	17289.0
1967	613.04	3,969,218	6474.6	1997	605.52	10,389,057	17157.2
1968	613.04	4,334,973	7071.3	1998	605.52	10,321,496	17045.7
1969	613.04	4,776,928	7792.2	1999	605.52	10,321,449	17045.6
				2000	605.50	10,373,234	17131.7

: km², / km²

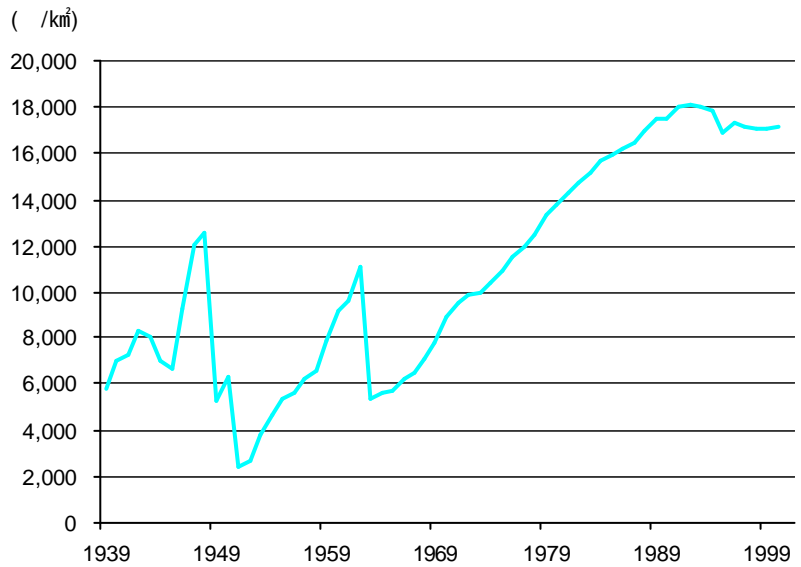
1963 가 48% 가 1949 가 42% 1973 가 10 1983 15,000 / km² 5,309 / km² 1990 가 60 17,000 / km² 1963 가 613.04 km² 1992 가 18,121 / km²

가
(區劃)
, LA
가
1.2-2

	(/km ²)	(km ²)	()
	16,364	605	990
	13,092	621	813
1)	4,810	1,370	659
가	4,773	683	326
	4,671	1,580	738
2)	8,084	762	616
	9,721	824	801
	3,037	1,215	369

1. 1), 2) 1999
2. 2000
3.
: 23 / : + / : +32 Borough
: + 3 / : / :
, 2002, 66

가
가
가



10.1 - 1

1.3

1.3-1

		/		/		/				
1955	1,422,415	532,855	37.5	833,638	58.6	55,922	3.9	70.6	6.7	23.6
1960	2,443,821	901,468	36.9	1,455,238	59.5	87,115	3.6	67.9	6.0	23.1
1965	3,470,880	1,307,371	37.7	2,032,717	58.6	130,792	3.8	70.8	6.4	23.5
1970	5,525,626	1,986,732	36.0	3,438,354	62.2	100,176	1.8	60.7	2.9	22.8
1975	6,879,646	2,311,634	33.6	4,422,848	64.3	144,982	2.1	55.5	3.3	23.5
1980	8,350,616	2,602,264	31.2	5,540,397	66.3	207,955	2.5	50.7	3.8	24.8
1985	9,625,754	2,719,335	28.3	6,626,463	68.8	279,956	2.9	45.3	4.2	26.4
1990	10,303,250	2,325,368	22.6	7,615,226	73.9	362,656	3.5	35.3	4.8	28.3
1995	10,550,871	2,242,408	21.3	7,849,545	74.4	458,918	4.3	34.4	5.8	30.2
2000	10,311,314	1,915,717	18.6	7,837,031	76.0	558,566	5.4	31.6	7.1	32.4

: , %

1. 14 , 15 64 65 .

2. 1960 , 65 60 . 1970

3. 65 .

4. = (+) / × 100 (%)

5. = / × 100 (%)

6. 5 .

7. 1965 , 1970

http://www.nso.go.kr/cgi-bin/sws_999.cgi?ID=DT_1B01002&IDTYPE=3&A_LANG=1&FPUB=3&SELITEM=

6% 가 1990

1955 .

(14 가 . 가 가

), (15 1955 58.6% 2000 76.0% 가 가 14

64), (65) 1.3 가 . 1960~70

. 80 . 1980

1955 가 가

가 14 가 20% 가

. , 1990~1995 3% 가

1955 37.5% 2000 18. . 1990 1995~2000

1.4 - 1

()

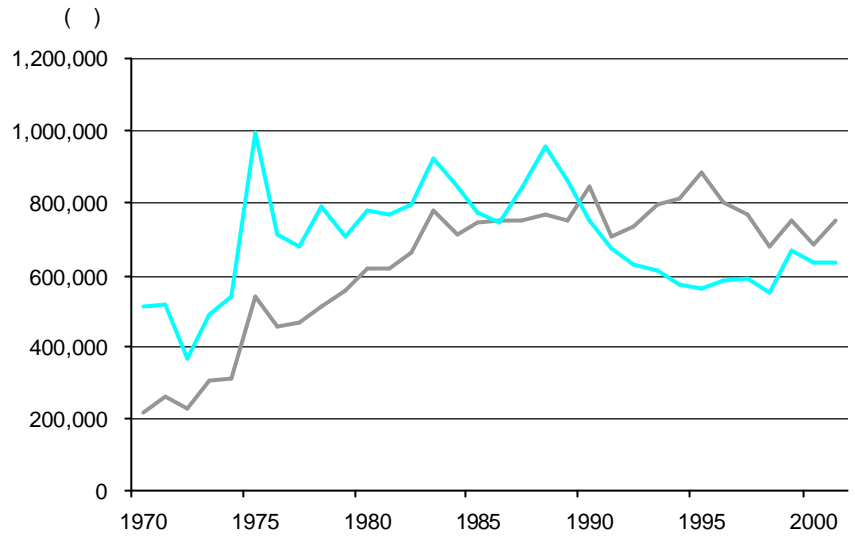
1970 22.7

100 18.6

1980 가 1990 15.3

100 34.9

1/3

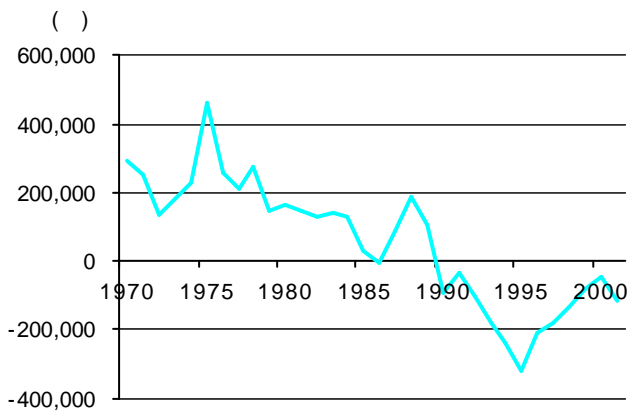


*

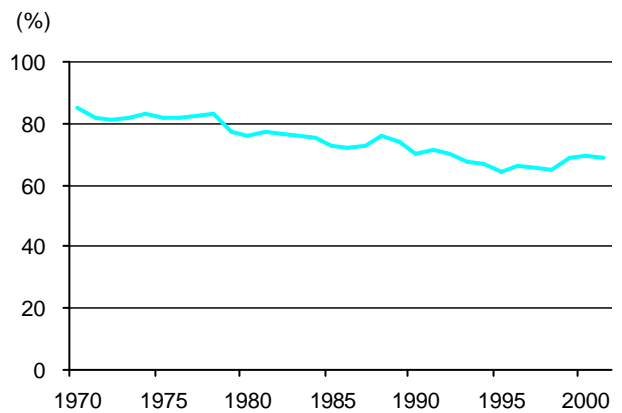
1.4 - 2

1.4 - 3

⋮ -



*

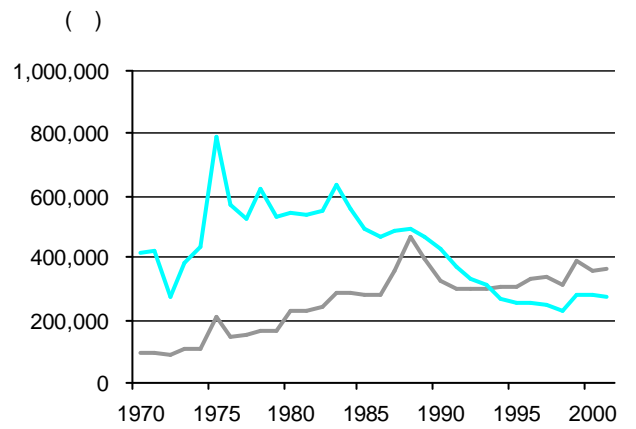
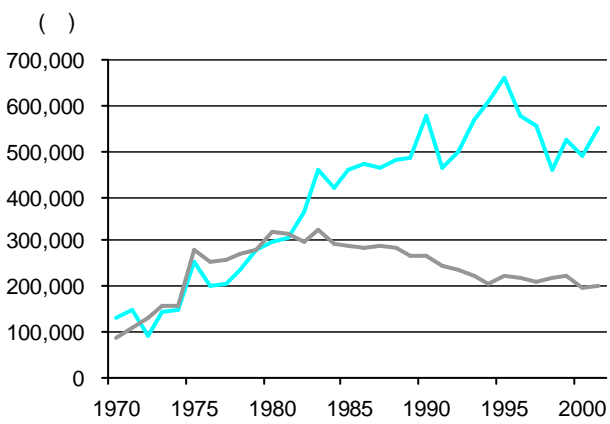


*

1986 : 1989 , 90 가
 가 1980 가
 가 1975 가 1990 가
 (-)가 가
 46 가
 1960~70 가 가
 가 가 , 1980 가
 1990 가 가 가
 가 가 가
 가 1995 가 1990 가
 (-)가 32 가 , 1994

1.4-4

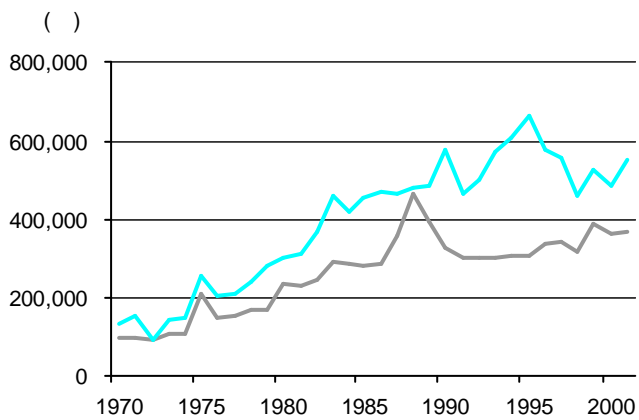
1.4-5



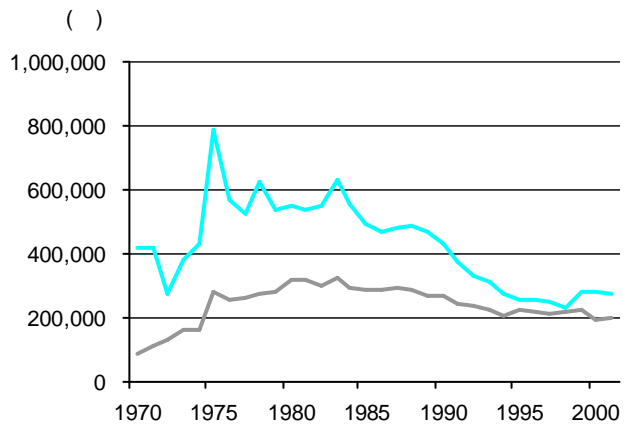
:
 (1990 가)
 . 1980 가
 , 1982 가 ()
 . 1995 32 가
 . 가 90
 . 가 ,
 , 가 ,
 . 가 ,
 . 1980 가 ,
 . 가

1.4-6

1.4-7



*



*

가

	1960~1970	1970~1980	1980~1990	1990~2000
가	3,080	2,839	2,249	-718
1) 가	605	1,580	3,040	3,485
2) 가	3,685	4,419	5,289	2,767
가	6,445	6,002	5,975	2,725
/ ()	47.8	47.3	37.6	-26.3
/ ()	9.4	26.3	50.9	127.9
/ ()	57.2	73.6	88.5	101.5

	1970	1980	1990	2000
	5,525,262	8,350,616	10,603,250	9,853,972
	3,353,272	4,930,335	7,970,687	11,404,090
	8,878,534	13,280,951	18,573,937	21,258,062
	31,435,252	37,406,815	43,390,374	45,985,289
/ ()	17.6	22.3	24.4	21.4
/ ()	10.7	13.2	18.4	24.8
/ ()	28.2	35.5	42.8	46.2

: , %

- 1.
2. = +
- 3.

, 1963; , 1972; , 1982
 , 1993; 1997
 , 2002

1.4-1 1.4-7 가 4% , 21.4% . 1990 가 7% 2000 24.8% 26.3% 가 가 1.3 . 가 1970 28. 가 , 1990~2000 가 2% 2000 46.2% 가 가 1.3 . 가 1.4-2 1960 1970 1990~2000 가 47.8% 가 가 9.4% 가 57.2% 가 1980 22.3% 1990 24. 가

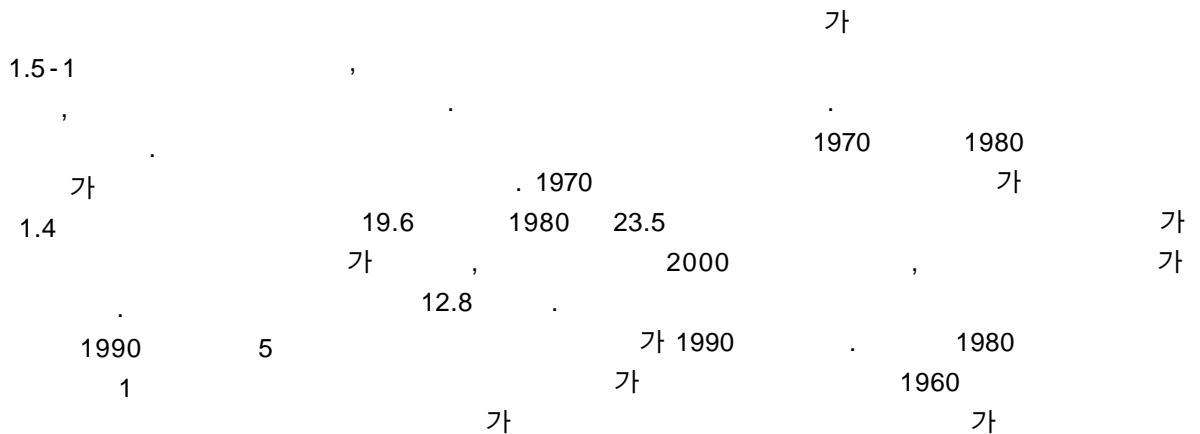
1.5

1.5-1

	가		가		가		가		
1970	111,799	19.6	16,222	2.9	16.75	46,646	8.6	2,995	0.6
1975	151,537	21.6	24,903	3.6	18.04	54,533	7.9	5,066	0.7
1980	199,807	23.5	31,445	3.7	19.81	89,919	10.8	7,823	0.9
1985	163,552	16.8	34,834	3.6	13.22	96,151	10.0	11,859	1.2
1990	167,742	16.0	37,926	3.6	12.38	103,982	9.8	11,651	1.1
1991	180,288	17.2	38,536	3.7	13.50	108,370	9.9	12,937	1.2
1992	182,662	17.5	37,856	3.6	13.90	107,821	9.8	13,461	1.2
1993	175,760	16.1	38,162	3.5	12.60	103,511	9.5	14,548	1.3
1994	175,433	16.2	39,168	3.6	12.60	100,960	9.3	16,321	1.5
1995	165,822	15.6	38,477	3.6	12.00	98,525	9.6	16,296	1.6
1996	151,695	14.5	38,483	3.7	10.80	105,100	10.0	18,464	1.8
1997	142,141	13.7	38,023	3.7	10.00	93,810	9.0	20,391	2.0
1998	133,761	13.0	37,915	3.7	9.30	88,219	8.5	26,090	2.5
1999	126,734	12.3	37,574	3.7	8.60	85,215	8.3	25,917	2.5
2000	131,932	12.8	38,815	3.8	9.00	78,745	7.6	25,477	2.5

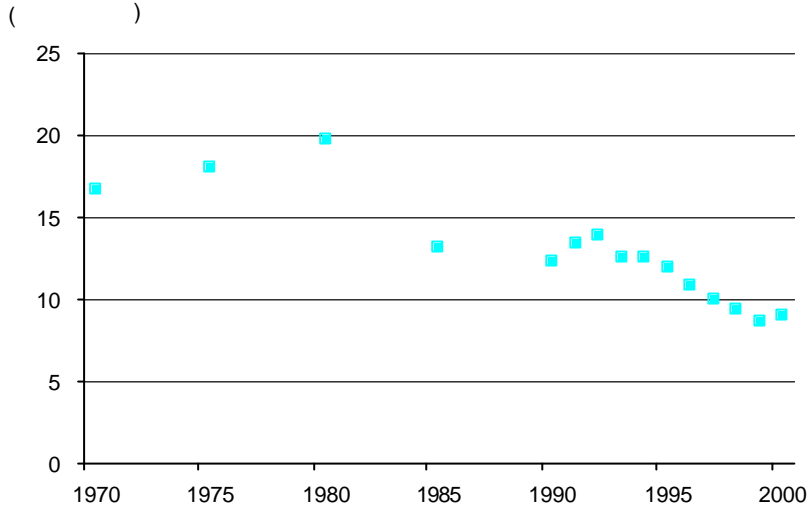
1. : = (가 /) × 1000

2. : = (가 /) × 1000



1.5-1

가



1970~1989 5

1.5-1

*

가
60~70

가

가

1970 2.9 1975 3.6
가 , 3.5~3.8

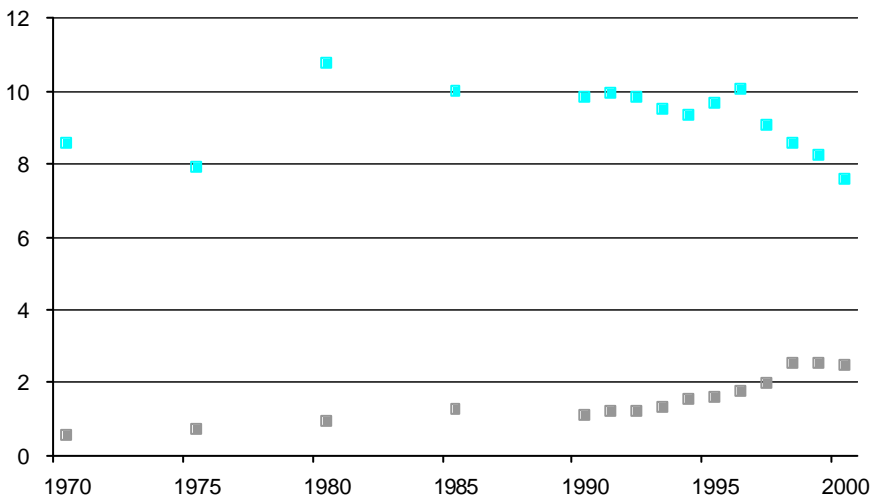
가

(1990
10

),

1.5-2

()



1970~1989 5

1.5-1

*

1970
8.59 , 1980
10.75 가

1990

2000

7.59

가

가

, 1970

0.

55 1980 0.
94, 1990 1.10, 2000 2.46
가 가 가

가

가

가

가 , 가
가 가

1.6

1.6 - 1

	14					2)
	1)					
1962	1,837,500	861,500	720,900	140,900	16.4	976,000
1963	2,030,500	896,000	702,000	194,000	21.7	1,134,500
1964	2,109,300	987,900	759,000	228,900	23.2	1,121,400
1965	2,157,307	991,813	787,622	204,191	20.6	1,165,494
1966	2,181,431	998,497	810,399	188,098	18.8	1,182,934
1967	2,462,880	1,100,352	923,723	176,629	16.1	1,362,528
1968	2,595,810	1,219,840	1,033,379	186,461	15.3	1,375,970
1969	2,741,055	1,318,150	1,123,400	194,750	14.8	1,422,905
1970	3,038,882	1,449,756	1,256,640	193,116	13.3	1,589,126
1971	3,494,309	1,769,346	1,575,648	193,698	10.9	1,724,963
1972	3,815,539	1,812,377	1,618,694	193,683	10.7	2,003,162
1973	4,201,000	2,011,500	1,811,300	200,200	10.0	2,189,500
1974	4,306,940	1,981,320	1,754,830	226,490	11.4	2,325,620
1975	4,752,040	2,247,800	1,998,370	249,430	11.1	2,504,240
1976	4,880,000	2,257,000	1,993,000	264,000	11.7	2,623,000
1977	5,135,000	2,389,000	2,153,000	236,000	9.9	2,746,000
1978	5,350,000	2,480,000	2,309,000	171,000	6.9	2,870,000
1979	5,563,883	2,506,103	2,296,747	209,356	8.4	3,057,780
1980	5,846,896	2,664,514	2,390,894	273,620	10.3	3,182,382
1981	6,142,719	2,714,585	2,460,564	254,021	9.4	3,428,134
1982	6,132,666	2,813,362	2,569,420	243,942	8.7	3,319,304
1983	6,281,325	2,911,684	2,665,298	246,386	8.5	3,369,641
1984	6,652,904	3,107,948	2,856,150	251,798	8.1	3,544,956
1985	6,855,000	3,203,000	2,926,000	277,000	8.6	3,652,000
1986	7,153,000	3,388,000	3,130,000	258,000	7.6	3,765,000
1987	7,337,000	3,648,000	3,404,000	244,000	6.7	3,689,000
1988	7,401,000	3,607,000	3,415,000	192,000	5.3	3,794,000
1989	7,648,000	3,764,000	3,558,000	206,000	5.5	3,884,000
1990	7,803,000	4,691,000	4,505,000	186,000	4.0	3,112,000
1991	7,987,000	4,868,000	4,705,000	163,000	3.3	3,119,000
1992	7,823,000	4,762,000	4,607,000	155,000	3.3	3,061,000
1993	7,909,000	4,890,000	4,722,000	168,000	3.4	3,019,000
1994	8,001,000	5,033,000	4,894,000	138,000	2.7	2,968,000
1995	8,106,000	5,147,000	5,014,000	133,000	2.6	2,958,000
1996	8,193,000	5,200,000	5,073,000	127,000	2.4	2,993,000
1997	7,924,000	5,043,000	4,907,000	136,000	2.7	2,881,000
1998	7,912,000	4,815,000	4,452,000	364,000	7.6	3,097,000
1999	7,872,000	4,793,000	4,463,000	329,000	6.9	3,079,000
2000	7,828,000	4,787,000	4,559,000	228,000	4.8	3,040,000

: , %

1. 1986 14 , 15

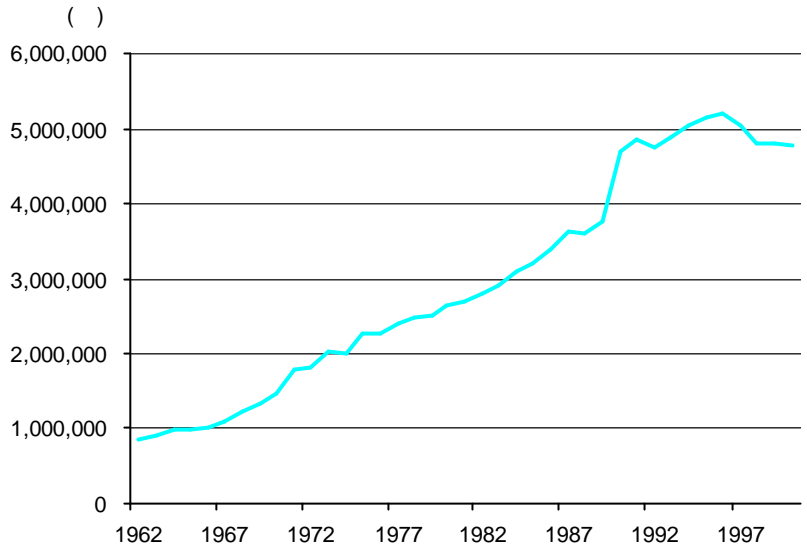
2. = / × 100 (%)

3.

, 1989

1.6-1

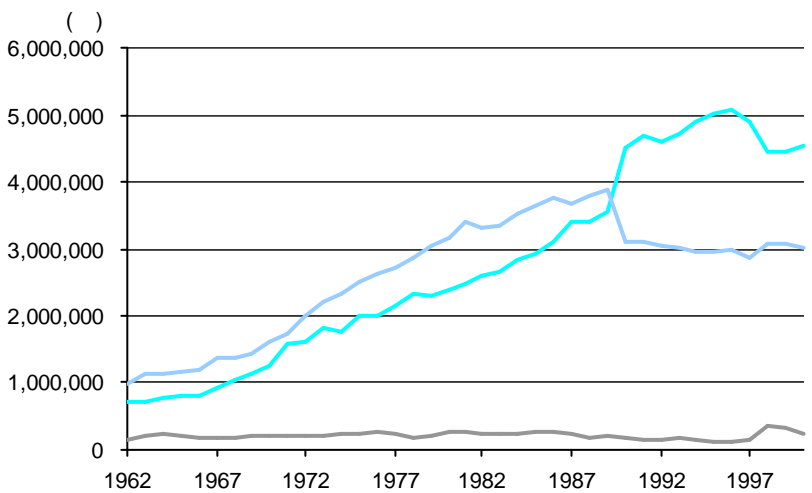
가 14
 1970 300
 , 2000 780
 2.6 가 ,
 ,
 1962 46.9% .
 1980 45%
 1990 14
 가 60%
 , 60~63%
 . 1990
 가 가



*

1.6-2

가
 1960
 가 1.6-1
 1960
 , 1964
 23.2%
 4 1
 . 1960
 1977 9.9%
 IMF 1996
 2.4%, 1997 2.7%
 , IMF 1998 7.
 6% , 2000
 4.8%



*